



# Bridge ReBuilding

## Minneapolis Public Works Department

Presented by  
Jon Wertjes, P.E., PTOE  
Director of Traffic & Parking Services





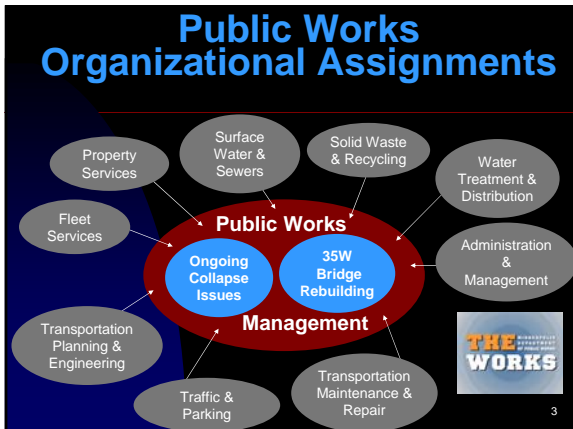
December 9, 2008

1

## Overview – 3 key items

- Initial Response - first 24 hours
- Ongoing Collapse Issues
- Rebuilding the Bridge

2



## 35W Rebuilding (City efforts)

- **Public Works leadership**
  - ◆ Single Point of Contact & Liaison
  - ◆ Regular meetings with MnDOT
  - ◆ Internal City Study Teams – North & South Banks
  - ◆ Local Issues – right of way, utilities, etc.
  - ◆ Municipal Consent
  - ◆ Design/Build/Construction Assistance

4

## 35W Rebuilding (City efforts)

- **“Statement of Principles – Rebuilding the 35W Bridge” adopted by City Council**
  - ◆ Meet present and future transportation needs
  - ◆ Improve vehicle and transit capacity
  - ◆ LRT/BRT-ready
  - ◆ Support and identify funding to address other transportation needs
  - ◆ Meet all current environmental standards
  - ◆ New fifth lanes dedicated for transit/HOV
  - ◆ Equal Employment Opportunity goals are equal to the City's
  - ◆ Memorial should be created
  - ◆ Provide and seek community input on design and construction process

5

## 35W Rebuilding (City efforts)

- **Facilitated contacts with local citizens and businesses**
- **Ongoing meetings with MnDOT**
  - ◆ Minneapolis Park & Recreation Board
  - ◆ University of Minnesota
  - ◆ Neighborhoods, businesses and general public
- **Design-Build RFP process participation**
  - ◆ RFP review
  - ◆ Visual Quality Team
  - ◆ Selection
- **Internal City Study Teams – North & South Banks**
  - ◆ City PW & CPED staff assisted by consultants
  - ◆ Issue identification
  - ◆ Long-range transportation planning needs
  - ◆ Vision scenarios
  - ◆ 35W Bridge parameters

6

## 35W -- North Bank

### City Concerns, Needs and Issues

- ◆ River dredging operations
- ◆ Main St portal (80')
- ◆ 2<sup>nd</sup> Street
- ◆ Safety at NB ramp to Univ. Ave
- ◆ Bridge profile vs. future freeway under Univ/4<sup>th</sup> St
- ◆ Utilities – crossing and parallel

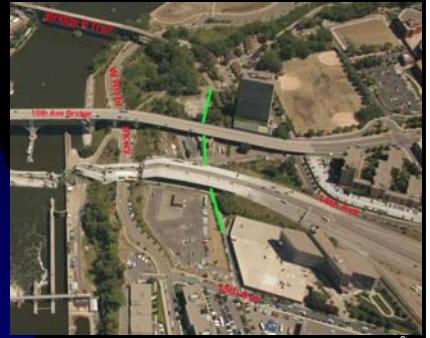


7

## 35W -- South Bank

### City Concerns, Needs and Issues

- ◆ West River Parkway
- ◆ Bridge 9 Trail Extension
- ◆ 14<sup>th</sup> Avenue impacts
- ◆ future South Bank freeway access
- ◆ Utilities – crossing and parallel



8

## New 35W Bridge Approval



### “Municipal Consent”

- ◆ Capacity
- ◆ Access
- ◆ ROW



9

## Design/Build/Construction

### Post RFP/Award

- ◆ Frequent meetings with Project office (both MnDOT & FMJV)
- ◆ Assisted on bridge design-build efforts
  - Plan review and feedback
  - Inspections on city infrastructure
  - Close out needs

- ◆ Stay out of the way

- ◆ Watch and learn about the impressive organization and coordination between and within both MnDOT and FMJV!



10



## Questions?



11